



WATCHTOWER

PATTERSON INN

Sign at the main entrance



Entrance to the Main Building



Entrance to the Main Building (more close)



Entrance to the Main Building



WATCHTOWER
EDUCATIONAL
CENTER

Sign at the entrance to the Main Building













Lobby



Lobby



Lobby



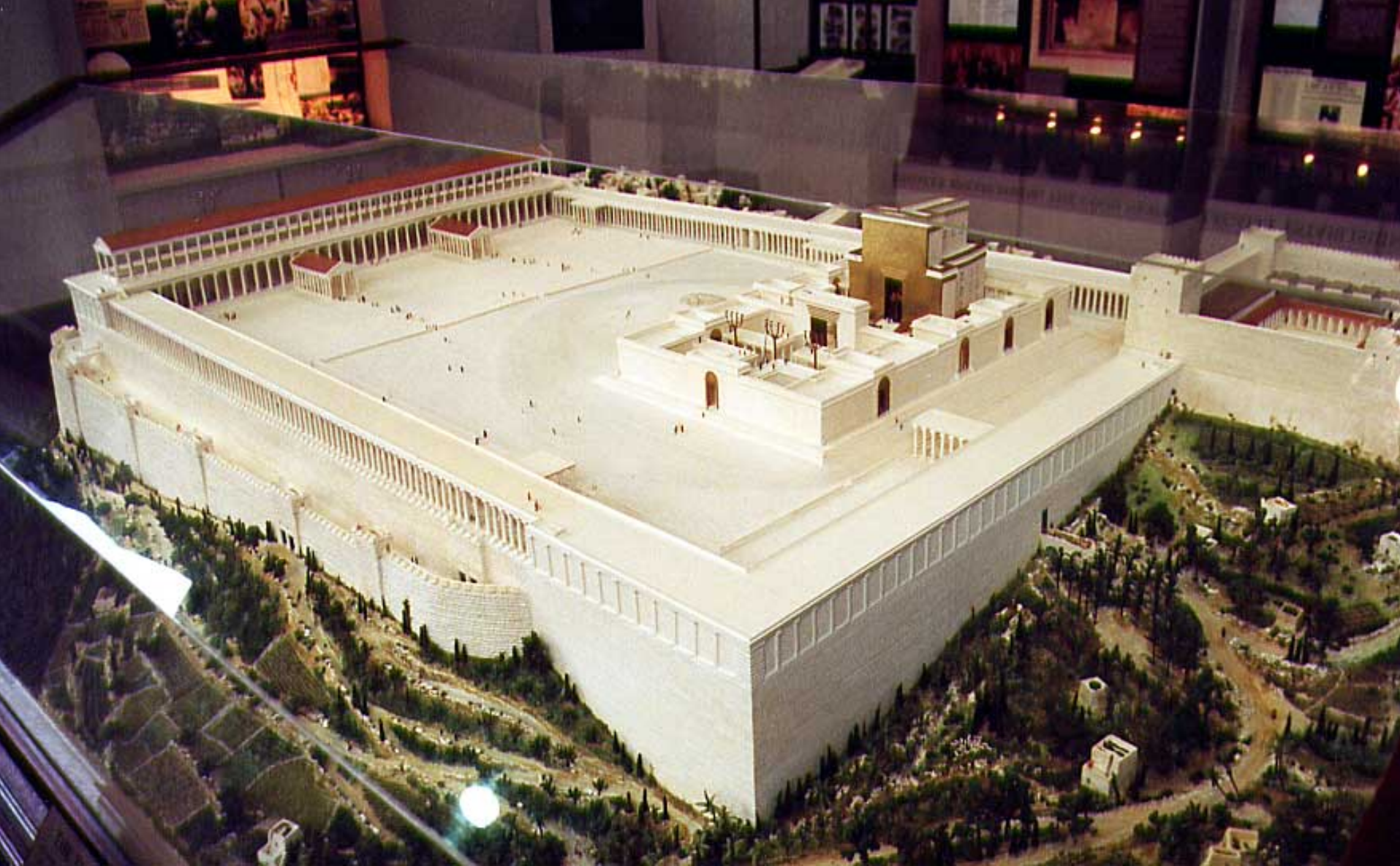
Lobby



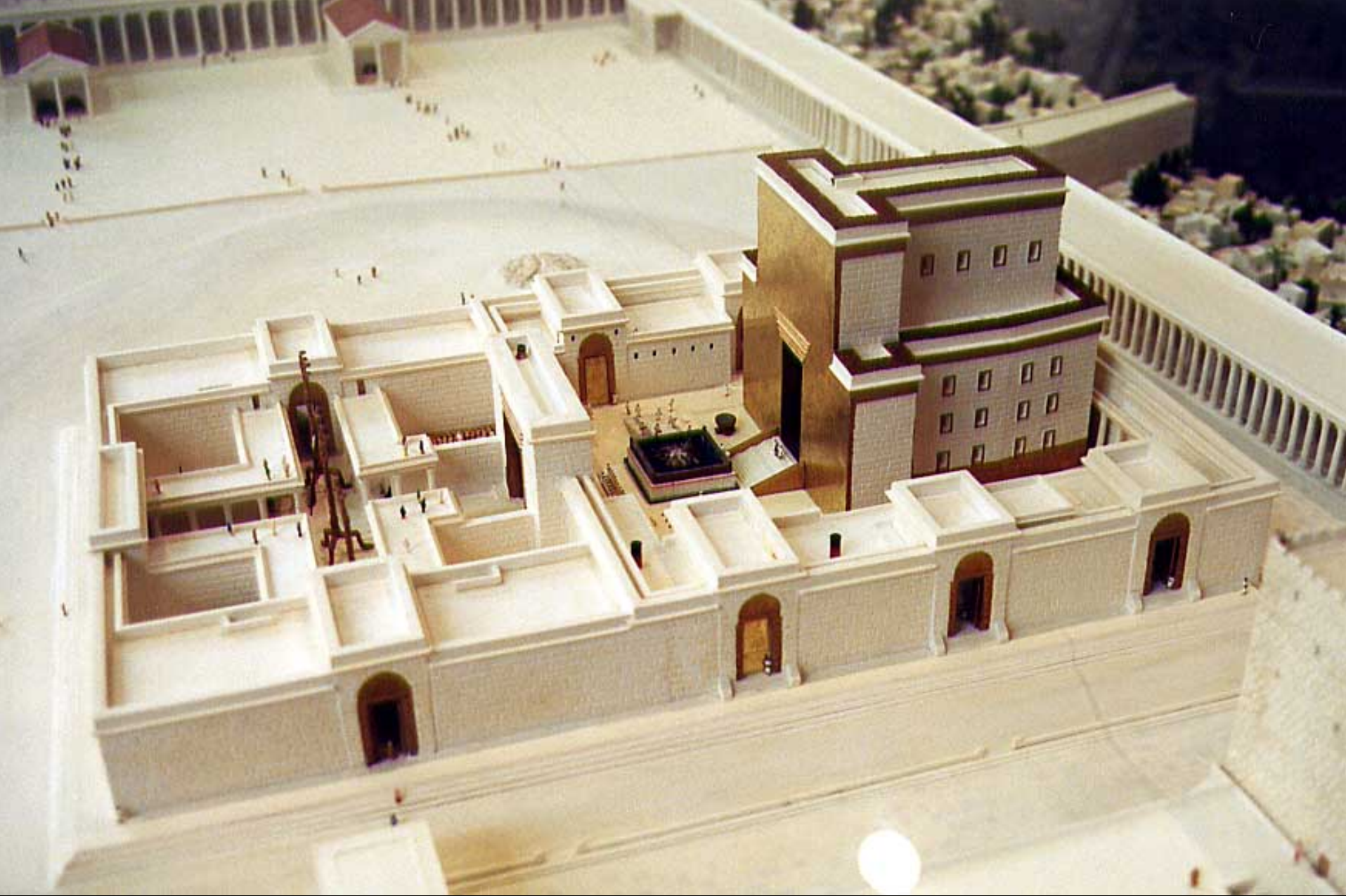
Beautiful Lamp in the Lobby

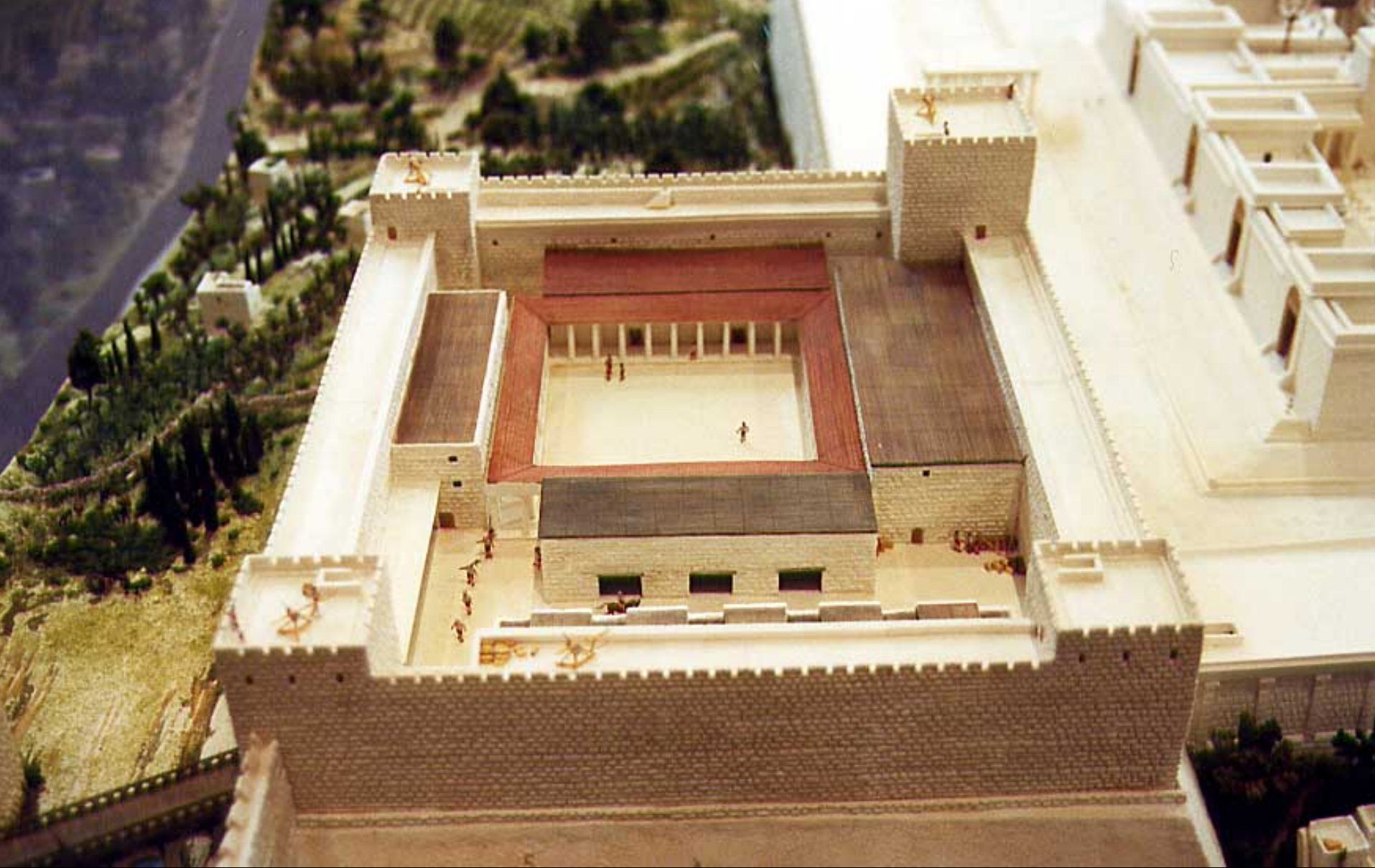


Exhibit in the Main lobby of ancient Jerusalem



Temple in Jerusalem





WATCHTOWER BIBLE COLLEGE
OF GILEAD

South Lansing

New York

President's Office
124 Columbia Heights
Brooklyn 4, N.Y.

January 1, 1947

Ulysses Vanell Glass

Dear fellow Publisher:

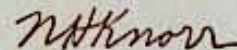
Your application for enrollment at the Watchtower Bible College of Gilead has been accepted. Please report for the term beginning February 26, 1947. Please bring your birth certificate or its equivalent with you, as well as your clothing and personal effects. Do not plan on returning to your home after you complete the course, for, no doubt, you will go direct from Gilead to your new assignment.

Brethren admitted to this class should arrive at Gilead not before February 23 nor later than February 24. If you travel by bus or train come to Ithaca, New York. From there you can telephone Ithaca 88F23 and someone will meet you at the station.

The period of time remaining until the class matriculates you should devote to field service and arranging for your trip to South Lansing. You will have some preparatory studying to do. Regardless of what you have read before this date, you should begin today with Genesis and carefully read the first nineteen books of the Bible (American Standard Version) before you reach the College. This is important. If you can cover more of the Bible it will be to your advantage. You should be familiar with the contents of the latest books and current issues of The Watchtower.

Be assured of my prayers and best wishes as you undertake this course of study to prepare yourself for future Kingdom service.

Your fellow servant in The Theocracy,



N. H. Knorr, President.

Letter of invitation to Ulysses Glass to attend the Gilead school from Bro Nathan Knorr.
Bro Glass went on to become a longtime instructor at Gilead himself

This letter is displayed in the lobby at Patterson



This is the main Auditorium at Patterson. It is used for graduations for Gilead annually. The meetings are also conducted here for the weekly Watchtower study for the Bethel family. The auditorium seats 1700 people.





Kitchen



Dining Room





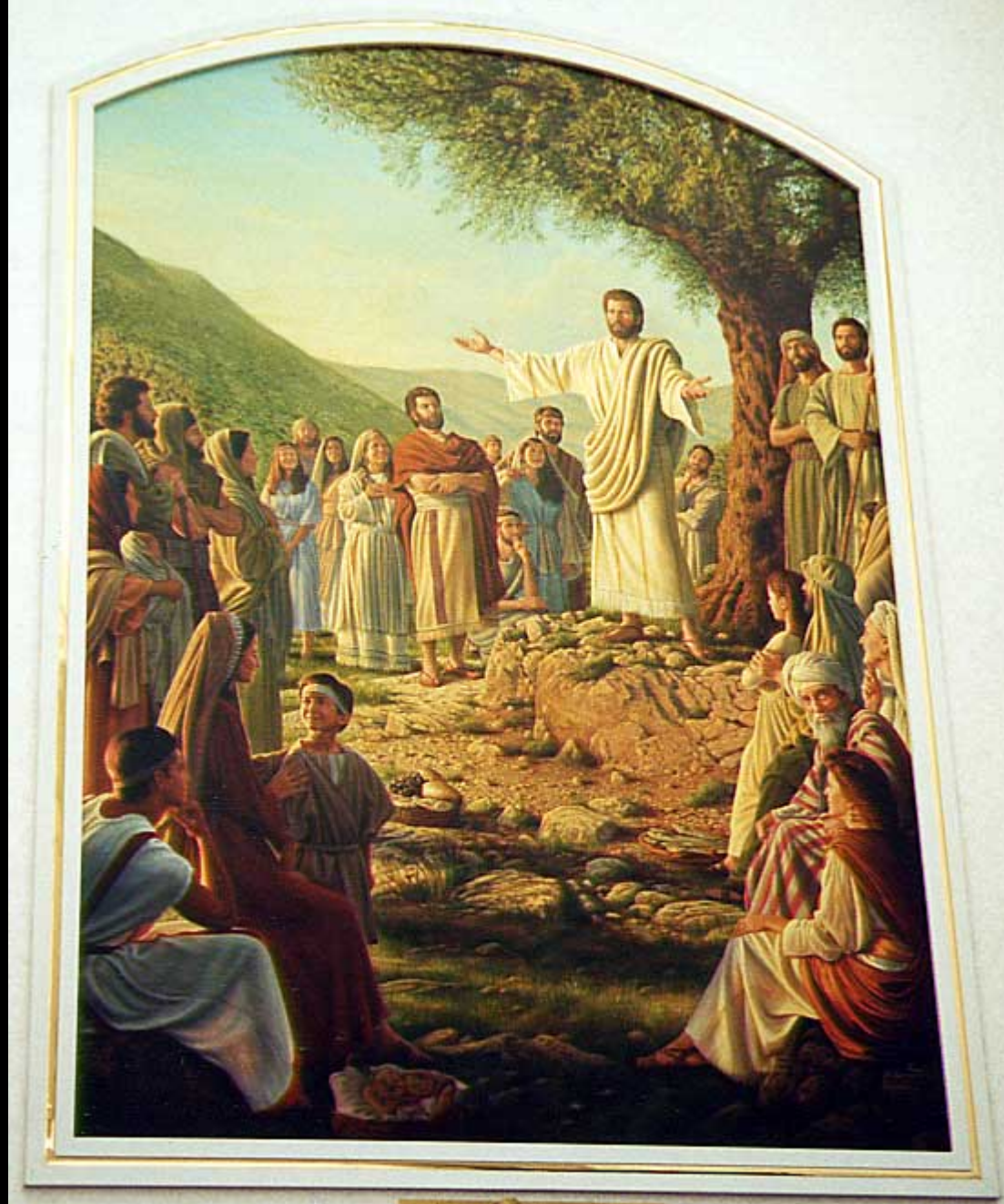


Laundry & Cleaners

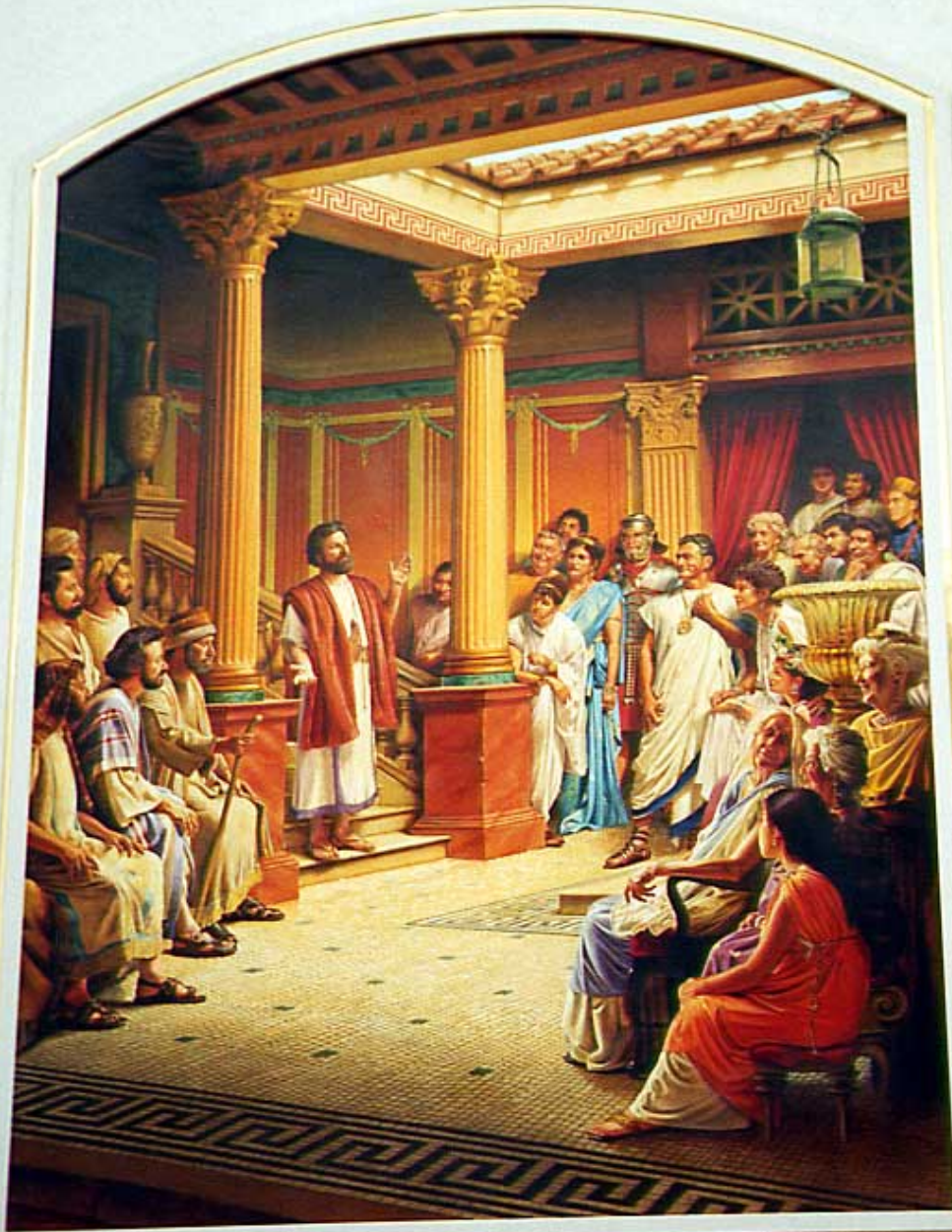


Bethelite apartment





A mural outside in the lobby next to the main Auditorium





No Tours
Beyond This Point
Thank you!

W O R K F L O W

1

TEXT
SUPPLIED



2

LAYOUT
DESIGNED



3
ARTWORK
COMES FROM:



COMPUTER ILLUSTRATION



IMAGE SERVICES



PAINTING



PHOTOGRAPHY

4
WRITING
COMMITTEE
REVIEWS



5
ARTWORK
SCANNED



6
COLOR
ACCURACY
CHECKED



DEPARTMENT

Information Board for the Art Department

WATCHTOWER BIBLE SCHOOL OF GILEAD

On February 1, 1943, the Watchtower Bible School of Gilead was established for the purpose of training men and women to undertake missionary service wherever they would be needed in the worldwide field. The five-month course focuses on a study of the Bible and also provides instruction in theocratic organization and missionary service.



1943-1944, School of Gilead students
at the Watchtower Bible School of Gilead



The 1944 class of Gilead at South Lefferts, New York



1944-1945, School of Gilead students
at South Lefferts, New York



Students receiving their
diplomas at graduation



1945-1946, School of Gilead students
at South Lefferts, New York



Students receiving their
diplomas at graduation



1946-1947, School of Gilead students
at South Lefferts, New York



1947-1948, School of Gilead students
at South Lefferts, New York



1948-1949, School of Gilead students
at South Lefferts, New York

1949, School of Gilead students
at South Lefferts, New York



1949, School of Gilead students
at South Lefferts, New York



WATCHTOWER EDUCATIONAL CENTER

AN AERIAL HISTORY



A total of 670 acres on the east and west sides of Route 22 were purchased in 1984. Over 100 acres have been developed for the educational center itself. Each year, from 1987 until the present, significant changes have taken place on the project as new buildings were erected and landscaping was developed. All of the work involved in completing the Watchtower Educational Center has resulted in a pleasant and peaceful location for Bible-based education.





Waiting area





Buildings









Gardens



















Front Entrance





Fountain



A cascading patio fountain. Notice the shape of the Watchtower









The END!

WATCHTOWER

Good bye!

PATTERSON INN

